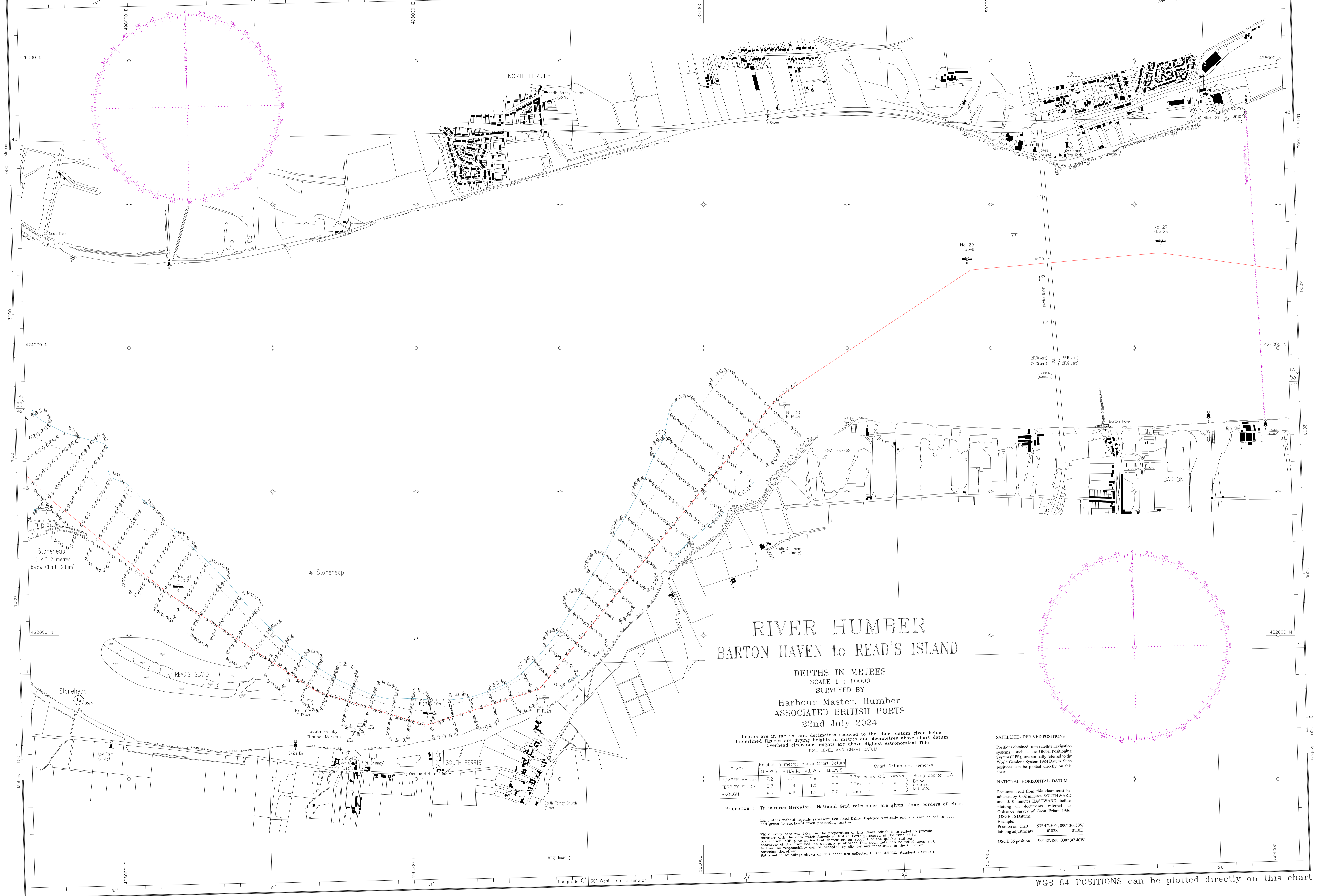


WGS 84 POSITIONS can be plotted directly on this chart



# RIVER HUMBER BARTON HAVEN to READ'S ISLAND

DEPTHS IN METRES  
SCALE 1 : 10000  
SURVEYED BY

Harbour Master, Humber  
ASSOCIATED BRITISH PORTS  
22nd July 2024

Depths are in metres and decimetres reduced to the chart datum given below  
Underlined figures are drying heights in metres and decimetres above chart datum  
Overhead clearance heights are above Highest Astronomical Tide

PLACE	Heights in metres above Chart Datum				Chart Datum and remarks
	M.H.W.S.	M.H.W.N.	M.L.W.N.	M.L.W.S.	
HUMBER BRIDGE	7.2	5.4	1.9	0.3	3.3m below O.D. Newlyn - Being approx. L.A.T.
FERRIBY SLUICE	6.7	4.6	1.5	0.0	2.7m - - - } Being approx. M.L.W.S.
BROUGH	6.7	4.6	1.2	0.0	2.5m - - - }

Projection :- Transverse Mercator. National Grid references are given along borders of chart.

Light stars without legends represent two fixed lights displayed vertically and are seen as red to port and green to starboard when proceeding upriver.

Whilst every care was taken in the preparation of this Chart, which is intended to provide preparation, ABP gives notice that thereafter, on account of the quickly shifting character of the river bed, no warranty is afforded that such data can be relied upon and, further, no responsibility can be accepted by ABP for any inaccuracy in the Chart or omission therefrom.

Bathymetric soundings shown on this chart are collected to the U.K.H.O. standard: CAY200-C

SATELLITE - DERIVED POSITIONS

Positions obtained from satellite navigation systems, such as the Global Positioning System (GPS), are normally referred to the World Geodetic System 1984 Datum. Such positions can be plotted directly on this chart.

NATIONAL HORIZONTAL DATUM

Positions read from this chart must be adjusted by 0.0 minutes SOUTHWARD and 0.10 minutes EASTWARD before plotting on documents referred to Ordnance Survey of Great Britain 1936 (OSGB 36 Datum).

Example:  
Position on chart 53° 42' 50N, 000° 30' 30W  
lat/long adjustments 0'02S 0'10E  
OSGB 36 position 53° 42' 48N, 000° 30' 40W

WGS 84 POSITIONS can be plotted directly on this chart